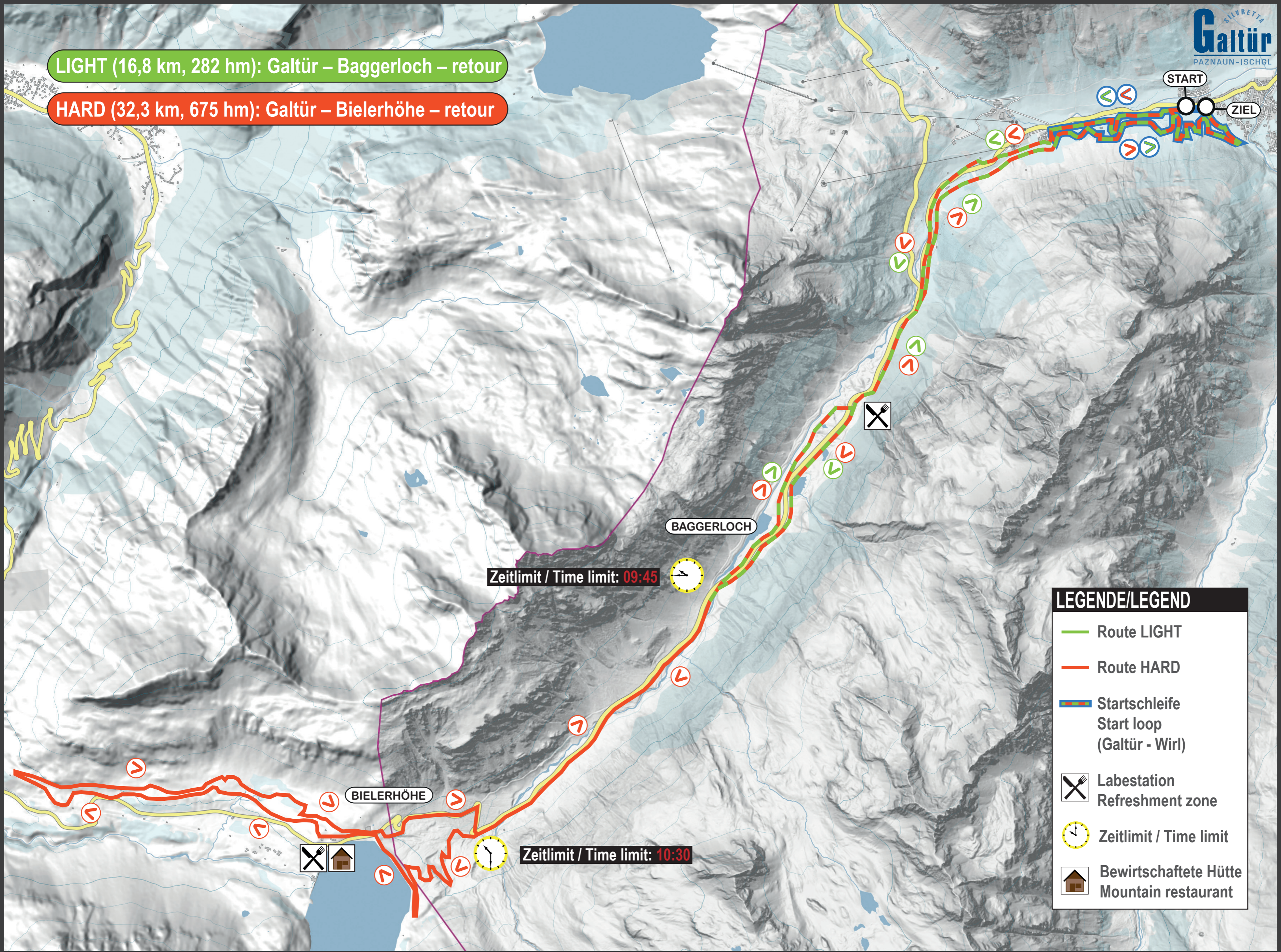


LIGHT (16,8 km, 282 hm): Galtür – Baggerloch – retour

HARD (32,3 km, 675 hm): Galtür – Bielerhöhe – retour



LEGENDE/LEGEND

- Route LIGHT
- Route HARD
- Startschleife
Start loop
(Galtür - Wirf)
- Labestation
Refreshment zone
- Zeitlimit / Time limit
- Bewirtschaftete Hütte
Mountain restaurant

